

THE OVAL EVOLUTION IS THE FLAGSHIP PRESS IN THE ROQ LINE OF AUTOMATIC SCREEN-PRINTING MACHINES. IT HAS IMPECCABLE PERFORMANCE AT EVERY LEVEL. THE OVAL EVOLUTION IS A MODEL THAT **ALLOWS FOR LARGER PRINTING AREAS**. IT PRESENTS A **REDUCED MAINTENANCE** DUE TO ITS ROBUSTNESS AND RELIABILITY; A DIRECT RESULT OF THE INNOVATIVE ENGINEERING AND QUALITY MATERIALS USED TO BUILD IT. THE OVAL EVOLUTION CAN BE CONFIGURED TO MEET ALL THE UNIQUE DEMANDS FROM YOUR CUSTOMER BASE AND WILL ALLOW YOU TO ACHIEVE YOUR OWN PERSONAL LEVEL OF EXCELLENCE.



:: OPTIONS

- LASER MARKERS
- POWER AND CONTROL CONNECTIONS FOR FLASH ARE BUILT INTO THE MACHINE BASE
- FLASH CURE UNITS
- COMPATIBLE WITH ROGFLOCK
- COMPATIBLE WITH ROQPRESS FOIL
- SKIP FUNCTION

(i) - for more information check next pages

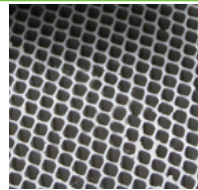
ROQPRINT OVAL EVOLUTION	P16	P20	P24	P28	P32	P36	P40	P44	P48	P52
maximum number of colors	1 to infinite									
number of pallets	16	20	24	28	32	36	40	44	48	52
number of flash cure connection units (optional)	6	8	10	12	14	16	18	20	22	24
maximum print size (mm/inch)	XL: 500 x 700 / 20"x28" 2XL: 700 x 1000 / 28" x 39"									
maximum screen size (mm/inch)	XL: 660 x 1050 / 26" x 41" 2XL: 860 x 1350 / 34" x 53"									
maximum frame profile / thickness (mm/inch)	50 x 50 / 2" x 2"									
index precision (mm/inch)	+- 0,025 / 0.001"									
maximum production (pieces/h)*	XL: 950 2XL: 900									
compressed air consumption (l/min. 7 bar)**	120 l/min - 4.3 cfm + number of each printhead									
maximum consumption (kVA)***	11	13	15	20	22	23	23	25	27	30
XL total length (mm/feet)	7100/23.3'	8750/28.7'	10400/34.1'	12050/39.5'	13700/44.9'	15350/50.4'	17000/55.8'	18650/61.2'	20300/66.6'	22000/72.2'
XL total height (mm/feet)	2235 / 7.33'									
XL total width (mm/feet)	3650 / 11.97'									
2XL total length (mm/feet)	9400/30.8'	11600/38.1'	13700/44.9'	15900/52.2'	18000/59.1'	20200/66.2'	22400/73.5'	24500/80.4'	26600/87.3'	28800/94.5'
2XL total height (mm/feet)	2310 / 7.58'									
2XL total width (mm/feet)	4250 / 13.94'									

ROQPRINT OVAL EVOLUTION	P16	P20	P24	P28	P32	P36
maximum number of colors	1 to infinite					
number of pallets	16	20	24	28	32	36
number of flash cure connection units (optional)	8	10	12	14	16	18
maximum print size (mm/inch)	3XL: 800 x 1100 / 31" x 43" 4XL: 900 x 1250 / 35" x 49"					
maximum screen size (mm/inch)	3XL: 1000 x 1500 / 39" x 59" 4XL: 1100 x 1600 / 43" x 63"					
maximum frame profile / thickness (mm/inch)	50 x 50 / 2" x 2"					
index precision (mm/inch)	+- 0.025 / 0.001"					
maximum production (pieces/h)*	850					
compressed air consumption (l/min. 7 bar)**	120 l/min - 4.3 cfm + number of each printhead					
maximum consumption (kVA)***	13	15	20	22	23	23
3XL total length (mm/feet)	10500 / 34.5'	13000 / 42.7'	15400 / 50.5'	17800 / 58.4'	20200 / 66.3'	22600 / 74.1'
3XL total height (mm/feet)	2350 / 7.7'					
3XL total width (mm/feet)	4545 / 14.9'					
4XL total length (mm/feet)	10600 / 34.8'	13100 / 42.9'	15550 / 51.1'	18000 / 59.1'	20300 / 66.6'	22700 / 74.5'
4XL total height (mm/feet)	2350 / 7.71'					
4XL total width (mm/feet)	4750 / 15.58'					

* one squeegee with flooding. ** consumption of each printhead: 60 l/min. | 2.12cfm in 14 pieces/min. See flash cure page.
- power supply: 220V, 3x220V, 3x400V in 50Hz or 60Hz

*** these values exclude the consumption with flash-curing, they should be calculated separately taking into account the number and model of the flash cure employed on the machine.

Common features of the screen printing machines:



ALUMINUM HONEYCOMB PALLETS

The optimal material in screen-printing pallet construction offering temperature regulation and light weight construction. Since these pallets are lighter than traditional pallets, they allow for lower energy consumption and eliminate inertia problems.



POLYCHROMATIC CENTRAL PANEL WITH TOUCH-SCREEN

ROQ presses use a central console that controls the press and all its accessories. We designed this control panel to be intuitive and user-friendly.



COMMAND PANEL IN EACH PRINTING HEAD

Each print head offers an additional control panel allowing the user to control all functions pertaining to that station as well as start, stop and palette rotation features.

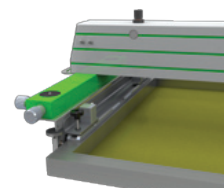


PRINT HEAD ELEVATION FOR EASY SCREEN CLEANING

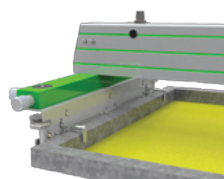
The print heads have a mechanical balancing system that allows for effortless manual lifting of the print head for cleaning the screens. In the OVAL EVOLUTION, this feature is automated.



All print heads are equipped with height adjustment, angle and stroke lengths as well as print speed and coverage speed. The squeegees movement is electric with AC inverter. On the NANO however, squeegee movement is pneumatic.



PNEUMATIC SCREEN HOLDER "U" CLAMP



PNEUMATIC SCREEN HOLDER PIN SYSTEM



MICRO REGISTRATION SYSTEM WITH VERNIER SCALE

Precision system that allows for an accurate, simple and quick final adjustment of the screens.



PLACEMENT OF THE FLASH CURE UNITS UNDER THE PRINT HEAD

The ROQDRY units can be rolled under any print head lifted in the high position. They get their power from a plug located on the base of the machine. There is no need for an external power drop. There is an additional command connection at the base of the machine allowing communication with the main control panel. The NANO press has flash cure units incorporated in the machine.

FREQUENCY DRIVE ROTATION FOR A QUICK AND SMOOTH INDEX (NANO AND YOU) AC SERVO-MOTOR ROTATION SYSTEM FOR A GREATER PRECISION ON THE SPINNING AND SMOOTHER ROTATIONS (ECO, OVAL PRO, OVAL EVOLUTION)

OPTIONS:



CONNECTIONS FOR THE FLASH CURE UNITS ON THE MACHINE FRAME

All ROQPRINT machines accessories are connected directly to the machine frame. These links may include compressed air, power and control cable to sync the module with the machine making the whole work as one and avoiding any loose cables on your shop or any loss of time.



LASERS FOR POSITIONING OF THE TEXTILE PIECES

All ROQPRINT machines can be equipped with lasers to ensure that the placement of the textile pieces is consistent improving the work results.



SKIP FUNCTION

Allows for the operator to indicate the machine to skip a pallet that was not loaded with fabric. By not printing on that pallet it will generate savings in energy, consumables and others. Can come in a form of a button or a pedal.